



SANDOWN CENTRE
FOR REGENERATIVE AGRICULTURE

1776 Glamorgan Rd
V8L 5S9
North Saanich

Annual Report

2025 - 2026

Sandown Centre for Regenerative Agriculture is a project of the non-profit organization Circular Farm and Food Society.

We respectfully acknowledge the traditional territories of the W̱SÁNEĆ people. Specifically, the BOKÉĆEN (Pauquachin) First Nation and W̱SÍKEM (Tseycum) First Nation, whose lands we are located on.



Message from the Executive Director



PAGE 1

This past year at the Sandown Centre for Regenerative Agriculture was defined by momentum — built through collaboration, adaptability, and a shared commitment to regenerative agriculture and food systems education. What stands out most is not any single accomplishment, but the strength of the community that made them possible: farmers, educators, partners, volunteers, and supporters working together toward a healthier food system.

2025 marked a significant transition. For the first time since our establishment, Sandown did not receive funding from the District of North Saanich Agricultural Reserve Fund. While this shift required adjustment, it also clarified our path forward. The year demonstrated our capacity to sustain and grow programming through partnerships, earned revenue, and diversified grant support — an essential step toward long-term resilience.

We deepened our impact with students, farmers, and community members across the region. Through hands-on education, collaborative land stewardship, and direct access to locally grown food, Sandown continued to serve as a living example of what regenerative agriculture can look like in practice.

We closed the year with a renewed lease agreement with the District of North Saanich, focusing our work on a reduced portion of the 83 acre Sandown Lands, dedicated to regenerative agriculture education and application. This foundation allows us to sharpen our impact while remaining pragmatic, responsive, and forward-looking.

Regenerative agriculture is more than a set of farming methods. It is a way of asking better questions — about land, community, and responsibility to future generations. As we look ahead to 2026 and beyond, we do so with confidence in what we've built and clarity about where we're going.

With gratitude,



Emily Harris
Executive Director
Sandown Centre for Regenerative Agriculture

Executive Summary



In 2025, the Sandown Centre for Regenerative Agriculture continued to grow its impact to support regenerative agriculture education, land-based learning, and community food systems across the Capital Region.

Program Delivery and Reach

- Delivered programs on behalf of the charitable organization Growing Young Farmers Society for the second consecutive year.
- Reached 1,211 Kindergarten to Grade 12 students from 56 classes across 15 schools.
- Provided hands-on food systems education through planting, harvesting, workshops, and farm-based learning.

Learning Farm: Education and Production

- Established the Learning Farm, a one-acre market garden supporting education, farmer training, and food access.
- Supported school meal programs, local food banks, and the South Island Farm Hub.
- Operated an on-site market for 15 weeks, offering produce directly to the public.
- Received support from Farm to Cafeteria Canada and United Way B.C. to expand infrastructure for supporting school meal programs.

Partnerships

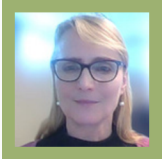
- Collaborated with Cascadia Seaweed, Indigenous Prosperity Centre, Farm to School BC, Flourish! School Food Society, and other regional partners.
- Supported FarmFolk CityFolk for the third consecutive year with half an acre of land and infrastructure for their Vancouver Island seed hub.

Together, these efforts strengthened Sandown's role as a regional hub for regenerative agriculture education, farmer support, and community-based food systems.



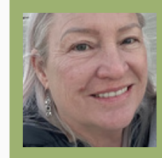
The Organization

ANN EASTMAN | BOARD CHAIR



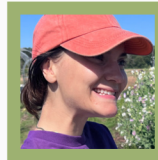
Ann is the Chair of the CFFS Board and has been a member since its founding in 2019. She has contributed extensively to the Sandown Centre through committee work and grant writing. With a background in agriculture, scientific research, and provincial government roles, Ann brings valuable expertise to her leadership.

JENNY CURTIS | SECRETARY



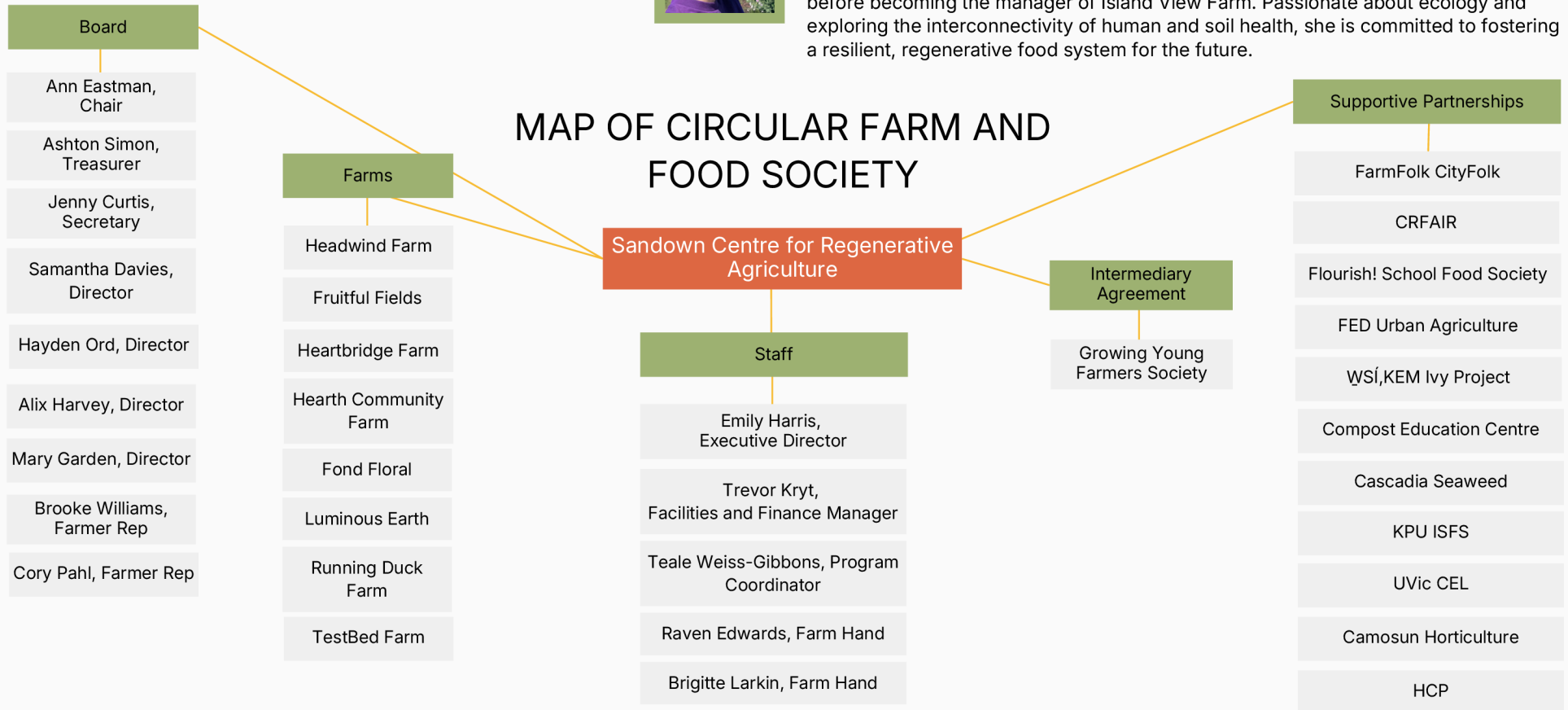
Jennifer has a Bachelor of Science degree in Agriculture majoring in Horticulture and a Master's Certificate in Project Management. Jenny retired from the BC Ministry of Agriculture where she held an Industry Specialist position and more recently held the position of General Manager for the BC Chicken Growers' Association before relocating to Sidney, BC. Jenny has had the pleasure to work with many different Agricultural boards and is passionate about farming.

ASHTON SIMON | TREASURER



Ashton is a regenerative farmer with a background in resource management, natural medicine, and sustainable food systems. She farmed at Sandown for two years before becoming the manager of Island View Farm. Passionate about ecology and exploring the interconnectivity of human and soil health, she is committed to fostering a resilient, regenerative food system for the future.

MAP OF CIRCULAR FARM AND FOOD SOCIETY



Sandown Centre at a Glance



Vision

We envision a region where folks of all ages and abilities are actively involved in regenerative agriculture and stewardship.

Mission

To empower farmers, restore land, and secure our food future.

3 Core Pillars

1. Regenerative Agriculture
2. Restoration and Stewardship
3. Community Engagement



6,625 total people engaged in regenerative agriculture



3,240+
Online
Subscribers



2,175+
Members of
the Public



1,210+
Unique
Youth

Engaging and Empowering Youth



Growing Young Farmers: Food Literacy Programming for K - 12 youth

Since 2023, we have delivered programs on behalf of the Growing Young Farmers Society through an Intermediary Agreement. In 2025, we experienced our biggest impact to date.

Collaboration with Food Systems Organizations: Maximizing impact

In 2025, we partnered with Cascadia Seaweed, the Indigenous Prosperity Centre, Farm to School BC, Flourish! School Food Society, the Community Action Bus, and others who bring diverse strengths and perspectives to our shared work.

1,211

K - 12
Youth visits

56

Classes
visited

15

Schools across
the CRD



The Regenerative Farmer Program

We currently support 8 small scale farm businesses on-site by offering land access, shared infrastructure, tools, resources, and mentorship. In 2025, we welcomed 2 new farms and saw 2 existing farms change farm businesses.

Outside of this program, we also supported Lorea Tomsin of Country Wools, and a honey bee keeper.



The Learning Farm

In 2025, we started a one-acre farm dedicated to our educational programs and to supply produce for our community. Namely, for Flourish! School Food Society, The Saanich Peninsula Lions Food Bank, The South Island Farm Hub, on-site, and for North Saanich Backpack Buddy Programs.

26,347+

Pounds of produce grown on-site

8

Farm businesses on-site

12

Acres in use for vegetable production

2

Non-profits operating farms on-site

Building Community



Engaging Students

We collaborated with a number of academic institutions to facilitate placements and classes on-site.

This included hosting the soils micro credential class from Vancouver Island University, the Camosun Horticulture class, the Pacific Rim College Backyard Gardening class, UVic Community Engaged Learning, and placement students from Camosun Horticulture and UVic.

Community Events

We were invited to speak at the FED Urban Agriculture Catalyst Conference for new farmers, to students at the Horticulture Centre of the Pacific, and to the Cowichan Agricultural Society as a panelist.

We also participated at Seedy Saturday Saanich and Victoria, the Make Share Market, the Farmer to Farmer Conference, Feast of Fields, Feed BC, and more.

53

Volunteers

22

Community Events

4

Placement Students
Supported

4

Academic Institutions
Engaged

Financial Summary



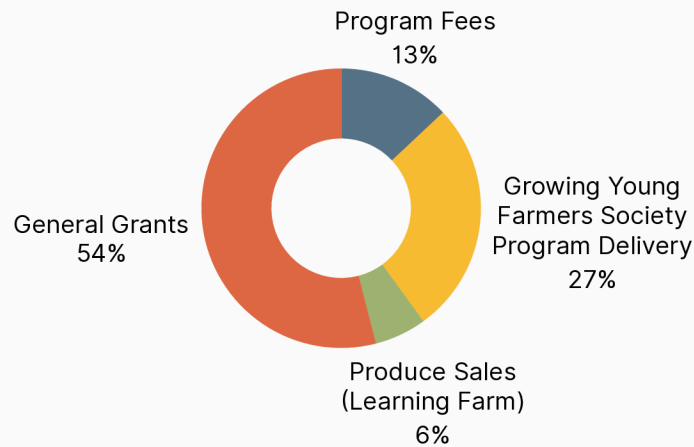
2025 was a year of important transition for Sandown Centre. For the first time since our founding, we operated without funding from the District of North Saanich Agricultural Reserve Fund. This change required adaptation but also sharpened our focus on sustainable growth.

The year highlighted our ability to maintain and expand programming through strategic partnerships, earned revenue, and a diversified mix of grants — a crucial milestone in building long-term resilience.

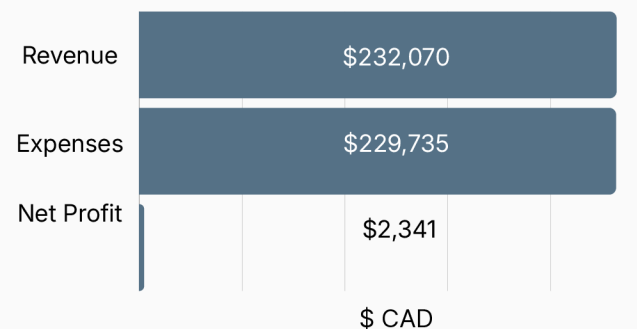
Capital upgrades included:

- Two Hoop houses
- Processing Hub
- Recycling Station
- Growing Young Farmers Educational Station
- Walk Behind Tractor and Implements
- Lawn Tractor

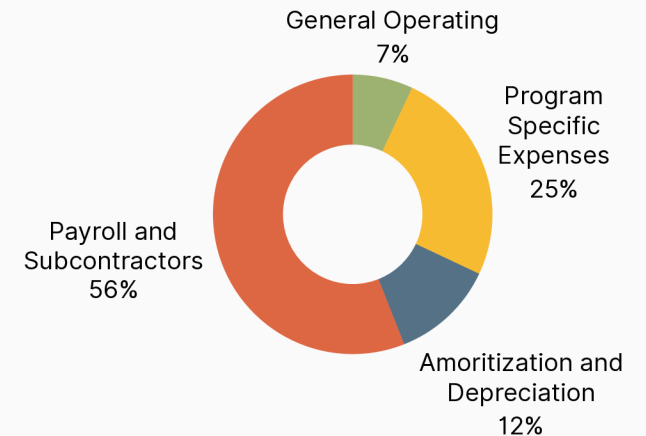
Revenue
Total: \$232,070



Net (Profit or Loss)
Total: \$2,341



Expenses
Total: \$229,735



Thank you to our Supporters



Regional sponsors, Partners, and Supporters

- Applied Bio-nomics
- Camosun Horticulture
- Capital Regional District
- Cascadia Seaweed
- Community Action Bus
- Compost Education Centre
- Country Wools
- Cowichan Agricultural Society
- CRFAIR (Capital Region Food and Agriculture Initiatives Roundtable)
- District of North Saanich
- District of Sooke
- Farm to Cafeteria Canada
- Farm to School BC
- FarmFolk CityFolk
- FED Urban Agriculture
- Fickle Fig
- Fireweed Farm
- First West Foundation
- Flourish! School Food Society
- Fond Floral
- Fruitful Fields
- Garden Works
- Government of Canada
- Growing Young Farmers Society
- Headwind Farm
- Heartbridge Farm
- Hearth Community Farm
- Indigenous Prosperity Centre
- Johnny's Seeds
- Kwantlen Polytechnic University
- Laura Melly
- Lena Syrov
- Living Lots
- Luminous Earth Garden
- Matthew Kyriakides
- Ministry of Agriculture
- Neighbourly Wine Co.
- Nezza Naturals
- North Saanich Farm Market
- Pacific Rim College
- Penny Gibbs
- Private Foundation
- Running Duck Farm
- Saanich Peninsula Community Association
- South Island Farm Hub
- South Island Farmers Institute
- St. Paul's United Church
- Steve Duck
- TestBed Farm
- The Market Garden
- The University of Victoria
- Unitarian Universalist Community of Victoria
- United Way BC
- Vancouver Island University
- Victoria Foundation
- West Coast Seeds
- Whole Foods